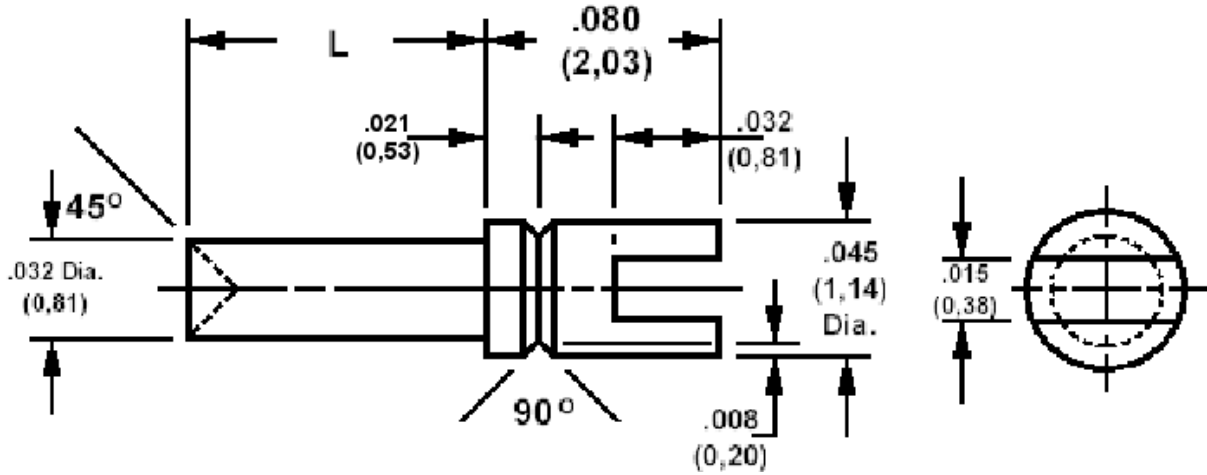


140-2187 Solder Terminal, Slotted

Recommended mounting hole .036 (0,91), #64 drill



How to order code
140-2187-XX-YY-00

Basic Part No XX = L dimension, YY = Plating Finish

DIMENSIONS (XX)			
Basic Part No	(XX)	L	Board Thickness
140-2187	-11	.030 (0,76)	.016 (0,41)
	-01	.045 (1,14)	.031 (0,79)
	-02	.077 (1,96)	.062 (1,57)
	-03	.108 (2,74)	.094 (2,39)
	-04	.139 (3,53)	.125 (3,18)

MATERIALS			
Component	Material	Finish (YY)	
Terminal	Brass	-01	-05
		Silver	Electro Solder

SWAGE TOOLING	
Recommended Swaging Tools:-	
Anvil	435-6436-01-00-00
Roll punch	435-6636-01-00-00