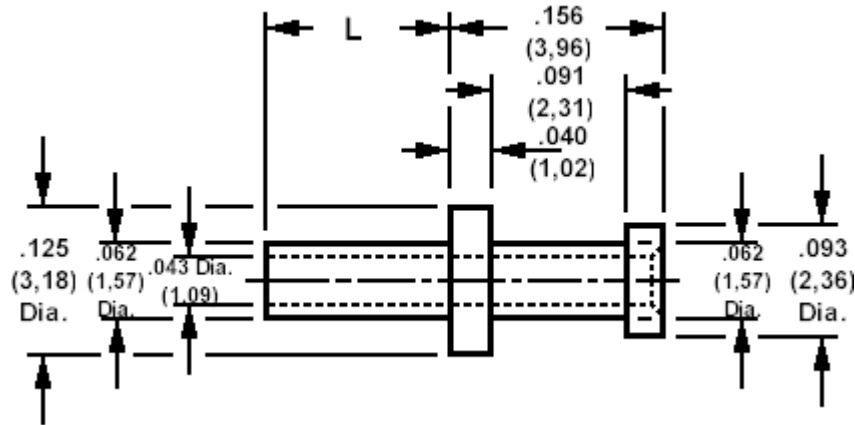


160-1512 Solder Terminal, Turreted, Thru Hole

Recommended mounting hole .067 (1,70), #51 drill



How to order code

160-1512-XX-YY-00

Basic Part No XX = L dimension YY = Plating Finish

DIMENSIONS (XX)			
Basic Part No	(XX)	L	Board Thickness
160-1512	-02	.084 (2,13)	.062 (1,57)
	-03	.115 (2,92)	.094 (2,39)
	-04	.147 (3,73)	.125 (3,18)

MATERIALS			
Component	Material	Finish (YY)	
Terminal	Brass	-01	-05
		Silver	Electro Solder

SWAGE TOOLING	
Recommended Swaging Tools:-	
Anvil	435-6404-01-00-00
Roll punch	435-6611-01-00-00
Flare Punch	435-6692-01-00-00