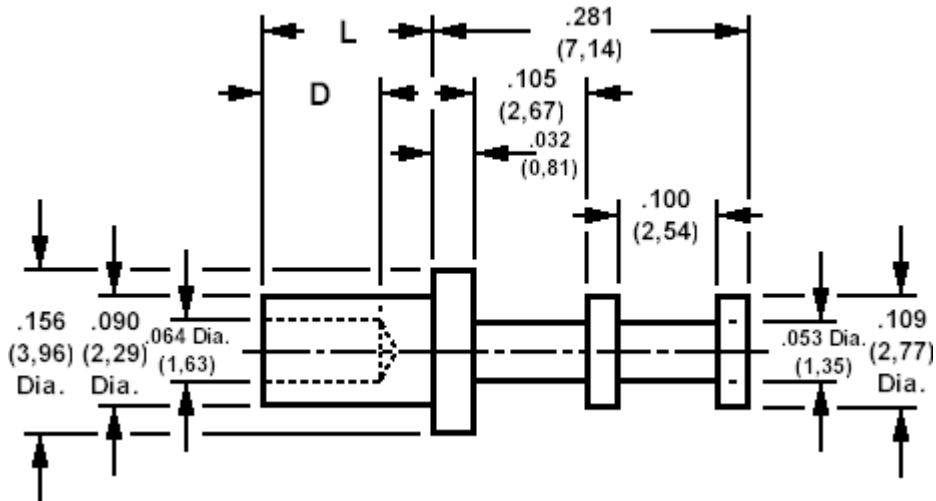


**160-2034 Solder Terminal, Turreted**

Recommended mounting hole .093 (2,36), #42 drill



**How to order code**

**160-2034-XX-YY-00**

Basic Part No XX = L dimension, YY = Plating Finish

DIMENSIONS (XX)				
Basic Part No	(XX)	L	Board Thickness	D
160-2034	-01	.078 (1,98)	.031 (0,79)	.063 (1,60)
	-02	.109 (2,77)	.062 (1,57)	.093 (2,36)
	-03	.141 (3,58)	.094 (2,39)	.093 (2,36)
	-04	.172 (4,37)	.125 (3,18)	.093 (2,36)

MATERIALS			
Component	Material	Finish (YY)	
		Terminal	Brass

SWAGE TOOLING	
Recommended Swaging Tools:-	
Anvil	435-6447-01-00-00
Roll punch	435-6604-01-00-00
Flare punch	435-6663-01-00-00