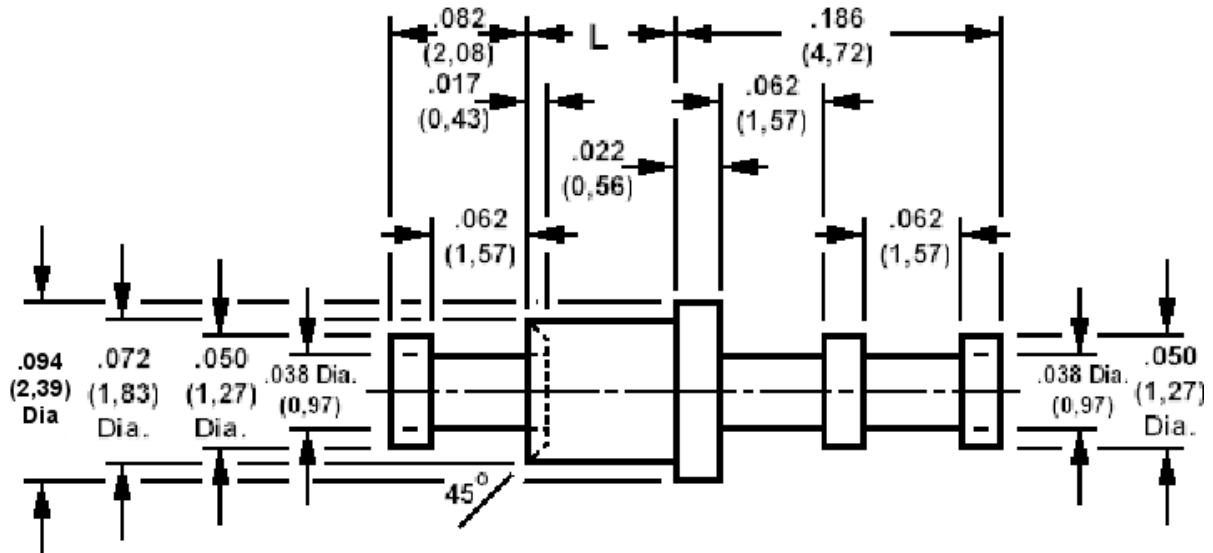


160-2044 Solder Terminal, Turreted, Feed Thru

Recommended mounting hole .076 (1,93), #48 drill



How to order code
160-2044-XX-YY-00

Basic Part No XX = L dimension, YY = Plating Finish

| DIMENSIONS (XX) | | | |
|-----------------|------|-------------|-----------------|
| Basic Part No | (XX) | L | Board Thickness |
| 160-2044 | -01 | .051 (1,30) | .031 (0,79) |
| | -02 | .082 (2,08) | .062 (1,57) |
| | -03 | .113 (2,87) | .094 (2,39) |
| | -04 | .145 (3,68) | .125 (3,18) |
| | -05 | .207 (5,26) | .188 (4,76) |

| MATERIALS | | | |
|-----------|----------|-------------|----------------|
| Component | Material | Finish (YY) | |
| | | -01 | -05 |
| Terminal | Brass | Silver | Electro Solder |

| SWAGE TOOLING | |
|-----------------------------|-------------------|
| Recommended Swaging Tools:- | |
| Anvil | 435-6420-01-00-00 |
| Roll punch | 435-6618-01-00-00 |