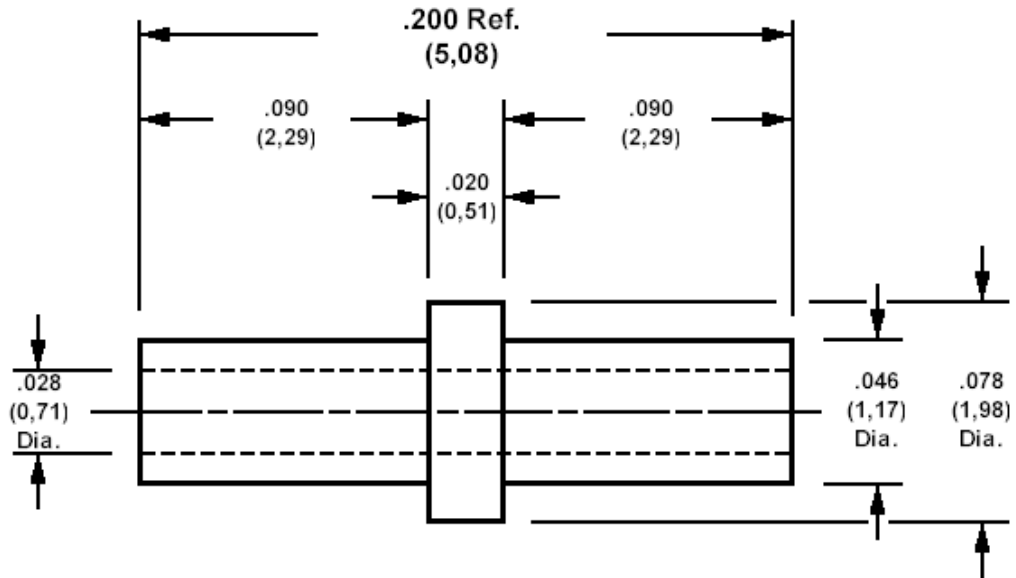


180-1460 Solder Terminal, Eyelet, Thru Hole

Recommended mounting hole .052 (1,32), #55 drill



For Board Thickness .062 (1,57) for 24-23 AWG wire

How to order code

180-1460-02-YY-00

Basic Part No YY = Plating Finish

MATERIALS		
Component	Material	Finish (YY)
		-05
Terminal	Brass	Electro Solder

SWAGE TOOLING	
Recommended Swaging Tools:-	
Anvil	435-6443-02-00-00
Roll Punch	435-6642-02-00-00