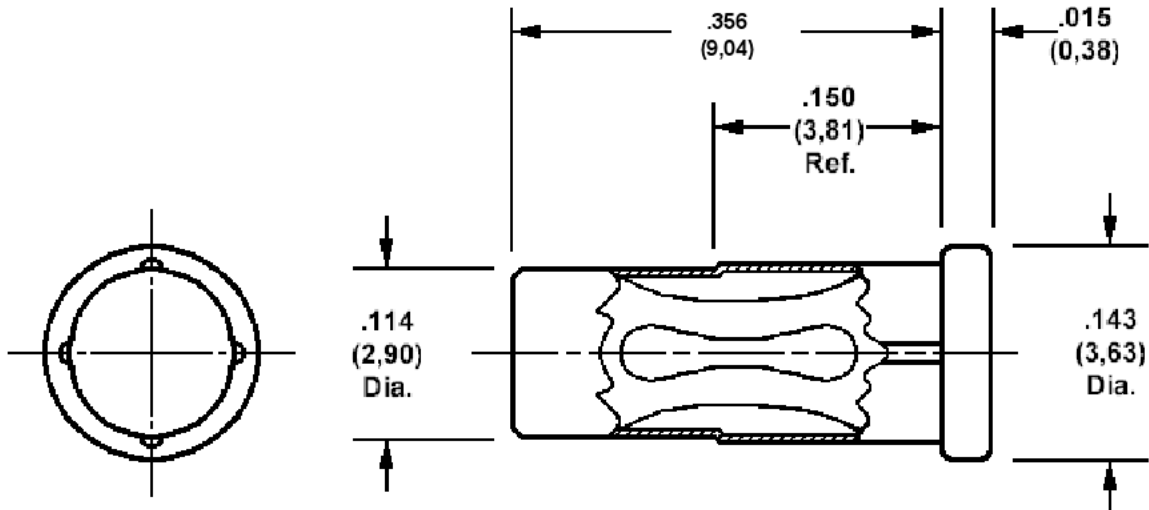


**450-1806 Press Mount Socket,
 for .080 (2,03) Diameter Pins**

Recommended mounting hole .116 (2,95) + 0.002 (0,05) - 0.001 (0,03), #32 drill



Min hole depth .360 (9,14)

How to order code
450-1806-01-XX-00
Basic Part No XX = Finish

MATERIALS				
Component	Material	Finish(-03)	Finish (-04)	Finish (-06)
Body	Copper	Gold over Nickel	Electro Tin	Electro Tin
Spring	Beryllium copper	Gold over Nickel	Electro Tin	Gold over Nickel