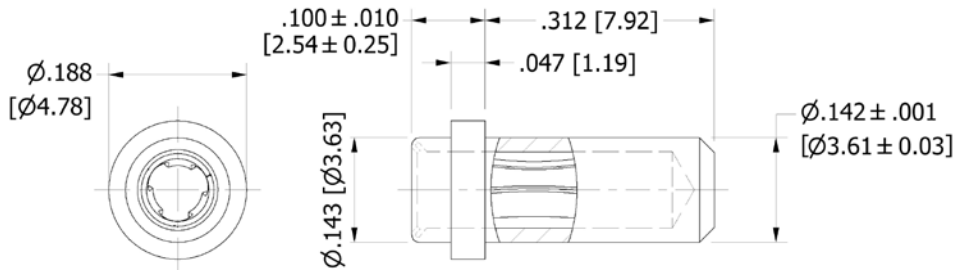


450-3398 Solder Mount Socket, for .080 (2,03) Diameter Pins

Recommended mounting hole .144 (3,66) ± .001 (0,03) # 43 drill



Min hole depth .333 (8,46)

How to order code
450-3398-01-XX-00
Basic Part No XX = Finish

MATERIALS				
Component	Material	Finish (-03)	Finish (-04)	Finish (-06)
Body	Brass	Gold over Nickel	Electro Tin	Electro Tin
Spring	Beryllium copper	Gold over Nickel	Electro Tin	Gold over Nickel

Dimensions in inches [mm]
 Tolerance unless otherwise stated ±.005 [0.13]