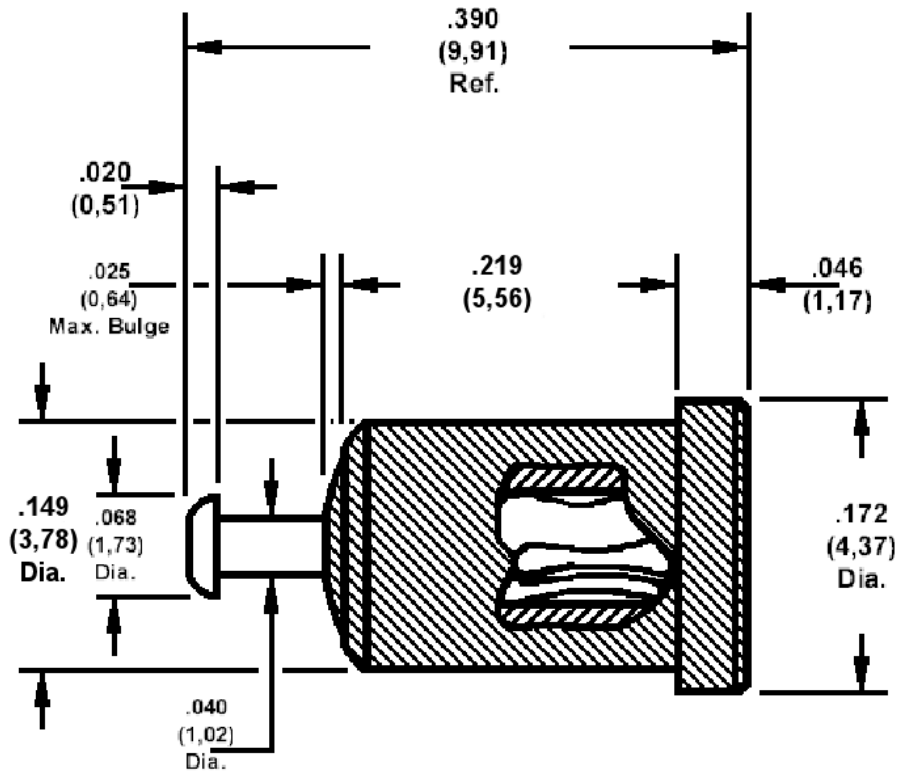


**450-4352 PTFE Insulated, Press Mount Socket,
 for .040 (1,02) Diameter Pins**

Recommended mounting hole .135 (3,45) ±.002 (0,05)



Min hole depth .190 (4,83)

How to order code

450-4352-01-XX-YY

Basic Part No XX = Finish, YY = Colour

MATERIALS				
Component	Material	Finish (-03)	Finish (-04)	Finish (-06)
Body	Brass	Gold over Nickel	Electro Tin	Electro Tin
Spring	Beryllium copper	Gold over Nickel	Electro Tin	Gold over Nickel
Insulator	PTFE	-	-	-

COLOURS				
Color (YY)	-10	-12	-16	-19
	Black	Red	Blue	White

Select colour (others available to order, consult factory)

ADDITIONAL INFORMATION			
Basic Part No	For Panel Thickness	Flashover at sea level (VRMS)	Capacitance (pF)
450-4352-01-XX-YY	.031 (0,79) to .094 (2,39)	2500	.7