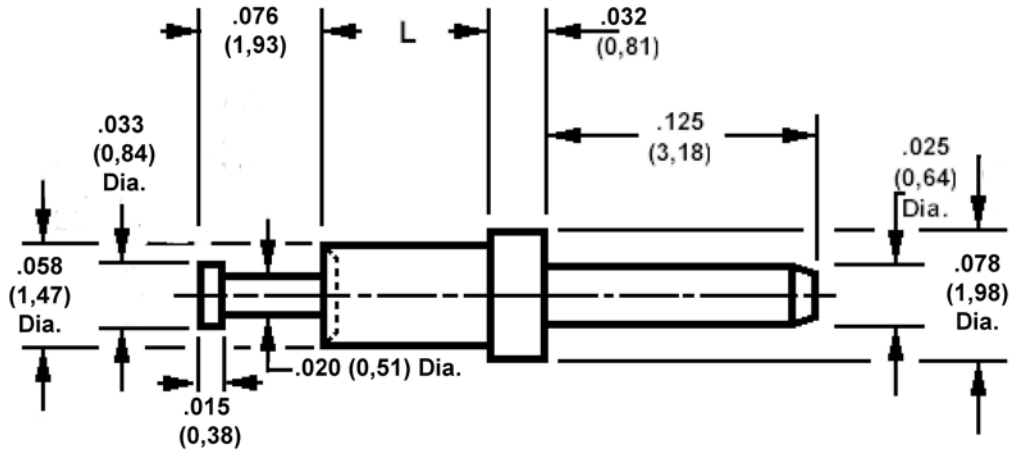


**460-3202 Swage Mount, .025 (0,64) Diameter Pin**

Recommended mounting hole .062 (1,57) ± .002 (0,05)



**How to order code**

**460-3202-XX-YY-00**

Basic Part No XX= L dimension, YY = Plating Finish

DIMENSIONS (XX)			
Basic Part Number	(XX)	L	Board Thickness
460-3202	-01	.051 (1,30)	.031 (0,79)
	-02	.082 (2,08)	.062 (1,57)
	-03	.113 (2,87)	.094 (2,39)

MATERIALS			
Component	Material	Finish (-03)	Finish (-04)
Pin	Brass	Gold over Nickel	Electro Tin

SWAGE TOOLING	
Recommended Swaging Tools:-	
Anvil	435-6496-01-00-00
Roll Punch	435-6619-01-00-00