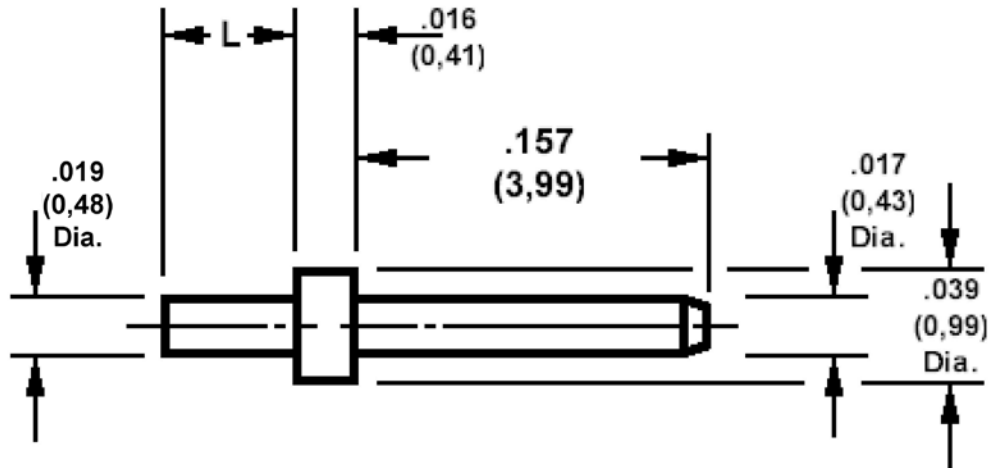


460-5247 Riveted, .016 (0,43) Diameter Pin

Recommended mounting hole .025 (0,64) ± .002 (0,05).



How to order code
460-5247-XX-YY-00

Basic Part No XX = L dimension, YY = Plating Finish

DIMENSIONS (XX)			
Basic Part Number	(XX)	L	For Substrate Thickness
460-5247	-01	.061 (1,55)	.025 (0,64)
	-02	.075 (1,91)	.040 (1,02)

MATERIALS			
Component	Material	Finish (-03)	Finish (-04)
Pin	Brass	Gold over Nickel	Electro Tin

SWAGE TOOLING	
Recommended Swaging Tools:-	
Anvil	435-6807-01-00-00
Roll Punch	435-6695-01-00-00