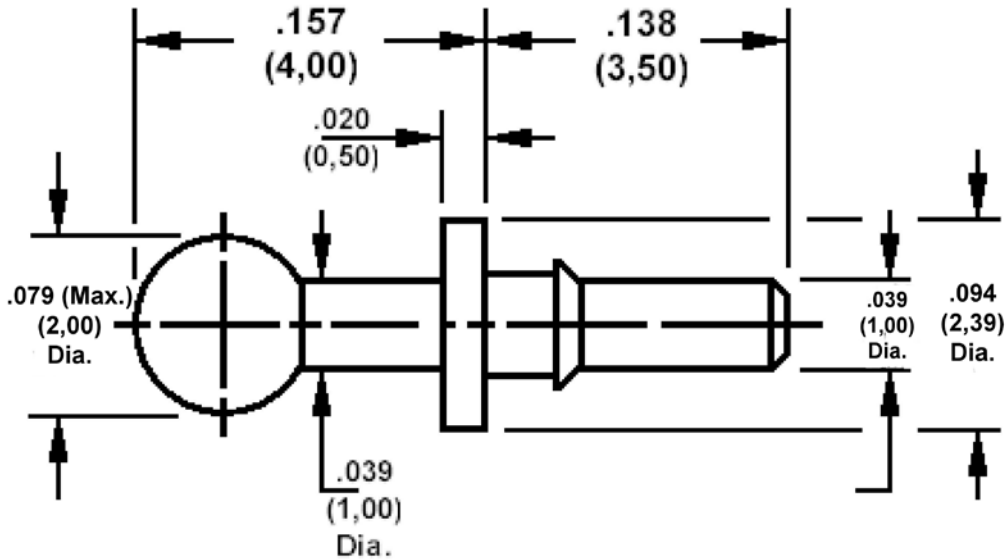


**460-8450 Connectaball, Barb Type Press Mount**

Recommended mounting hole .051 (1,30) ± .002 (0,05)



How to order code  
**460-8450-01-YY-00**  
 Basic Part No YY = Plating finish

MATERIALS					
Component	Material	Finish (-01)	Finish (-03)	Finish (-93)	Finish (-04)
Terminal	Brass	Silver	Gold over Nickel		Electro Tin
			50µ" (1,25µM) Au	10µ" (0,25µM) Au	

TOOLING	
Anvil	435-8053-01-00-00
Insertion Tool	435-8054-01-00-00

Minimum board thickness .055 (1,40)