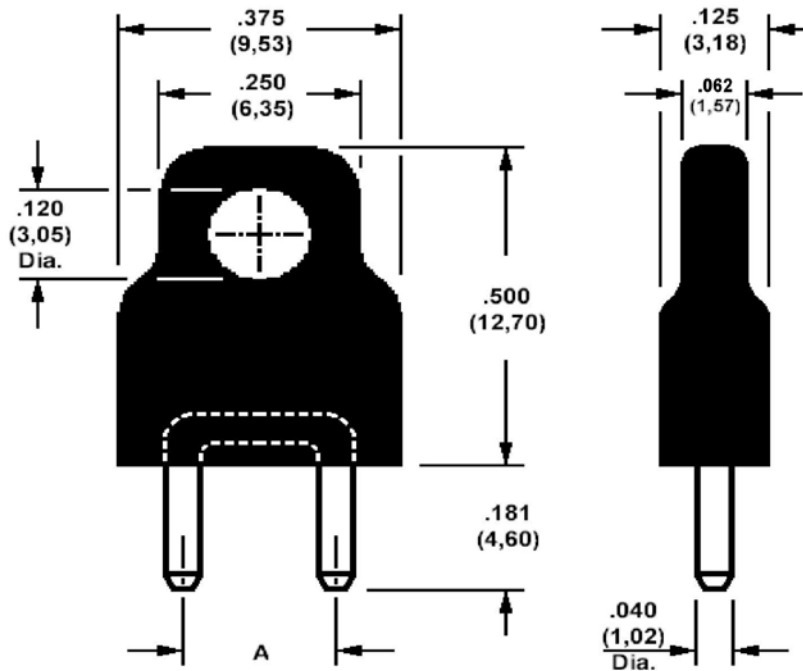


461-2871 Shorting Links, Insulated, .040 (1,02) Diameter Pins

(For non-insulated version see 360-0017)

(For wider pitch between pins, see 461-3771)



How to order code

461-2871-XX-03-YY

Basic Part No XX = A Dimension, YY = Colour

DIMENSIONS		
Basic Part No	Dash No (XX)	A Dimension
461-2871	-01	.200 (5,08)
	-02	.250 (6,35)

MATERIALS		
Component	Material	Finish (-03)
Pin	Brass	Gold over Nickel
Insulator	Polypropylene	Select colour (see below)

COLOUR (YY)		
-10	-12	-16
Black	Red	Blue

Dimensions in inches (MM)

Tolerance unless otherwise stated ± .010 [0.25]