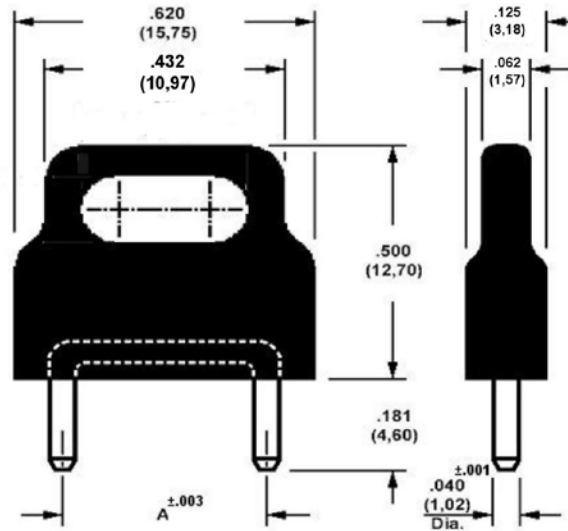


461-3771 Shorting Links, Insulated, .040 (1,02) Diameter Pins

(For non-insulated version see 360-0017)

(For narrower pitch between pins, see 461-2871)



**How to order code
 461-3771-XX-03-YY**

Basic Part No XX = A Dimension, YY = Colour

DIMENSIONS		
Basic Part No	Dash No	A Dimension
461-3771	-01	.400 (10,16)
	-02	.500 (12,70)

MATERIALS		
Component	Material	Finish (-03)
Pin	Brass	Gold over Nickel
Insulator	Polypropylene	Select colour (see below)

COLOUR (YY)		
-10	-12	-16
Black	Red	Blue

Dimensions in inches (MM)
 Tolerance unless otherwise stated ± .010 [0.25]