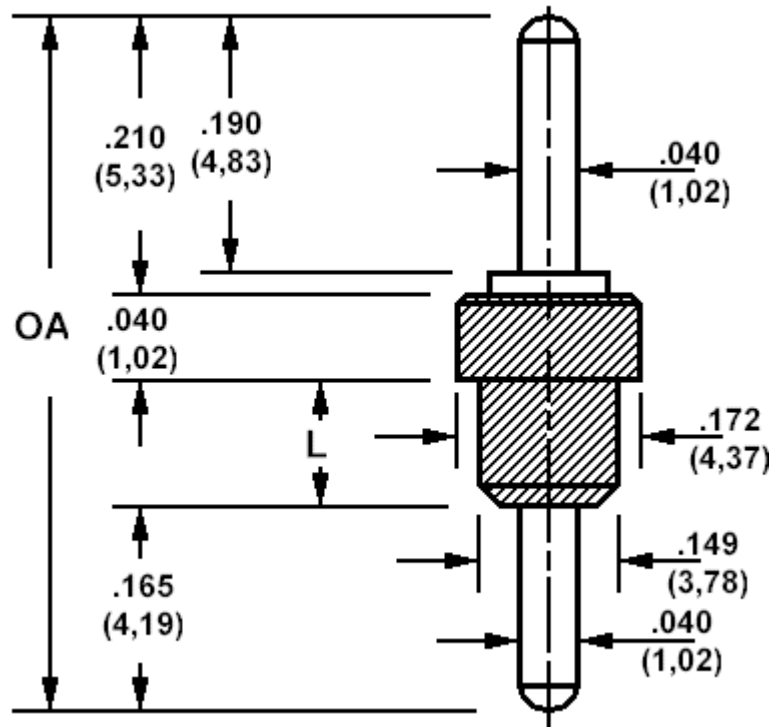


571-4176 Insulated solder terminal, Feed thru

Recommended mounting hole .136 (3,45)



How to order code 571-4176-XX-YY-19

Basic Part No (XX = Panel thickness, YY = plating finish. See tables for options)

| Basic Part No. | | OA (ref) | L | Panel Thickness (XX) |
|----------------|-----|--------------|-------------|----------------------------|
| 571-4176 | -01 | .515 (13,08) | .100 (2,54) | .031 (0,79) to .062 (1,59) |
| | -02 | .540 (13,72) | .125 (3,18) | .031 (0,79) to .085 (2,16) |
| | -03 | .580 (14,73) | .165 (4,19) | .031 (0,79) to .125 (3,18) |
| | -04 | .665 (16,89) | .250 (6,35) | .031 (0,79) to .210 (5,33) |

| Component | Material | Finish (YY) | |
|-----------|----------------|-------------|----------------|
| | | -01 | -05 |
| Terminal | Brass | Silver | Electro Solder |
| Insulator | Teflon - white | | |

| Additional Specifications | Panel thickness | | | |
|-----------------------------|-----------------|------|------|------|
| | -01 | -02 | -03 | -04 |
| Flashover VRMS at Sea Level | 3000 | 3000 | 3000 | 3000 |
| Capacitance (pF) | 0.4 | 0.4 | 0.4 | 0.4 |

Teflon is a registered trademark of Dupont