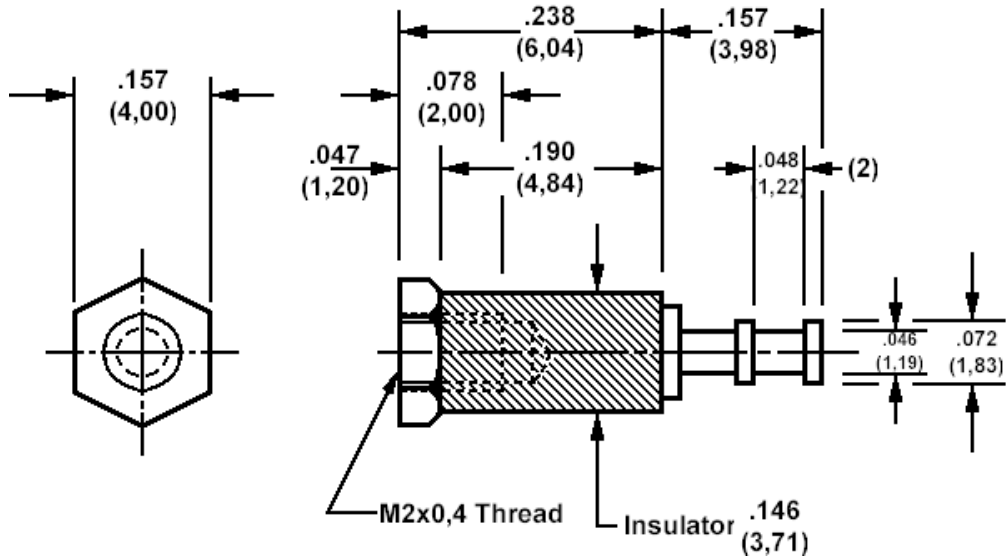


**572-4908 Insulated solder terminal, Turreted**



**How to order code**

**572-4908-01-YY-16**

Basic Part No (YY = plating finish. See tables for options)

Component	Material	Finish (YY)	
		-01	-05
Terminal	Brass	Silver	Electro Solder
Stud	Brass	Cadmium (plus chromate)	Cadmium (plus chromate)
Insulator	Diallyl Phthalate (blue)		

**RoHS Compliant option**

Component	Material	Finish (YY)
		-21
Terminal	Brass	Silver
Stud	Brass	Nickel
Insulator	Diallyl Phthalate (blue)	

**Additional Specifications**

Dielectric Withstanding Voltage (VRMS)	3000
--	------