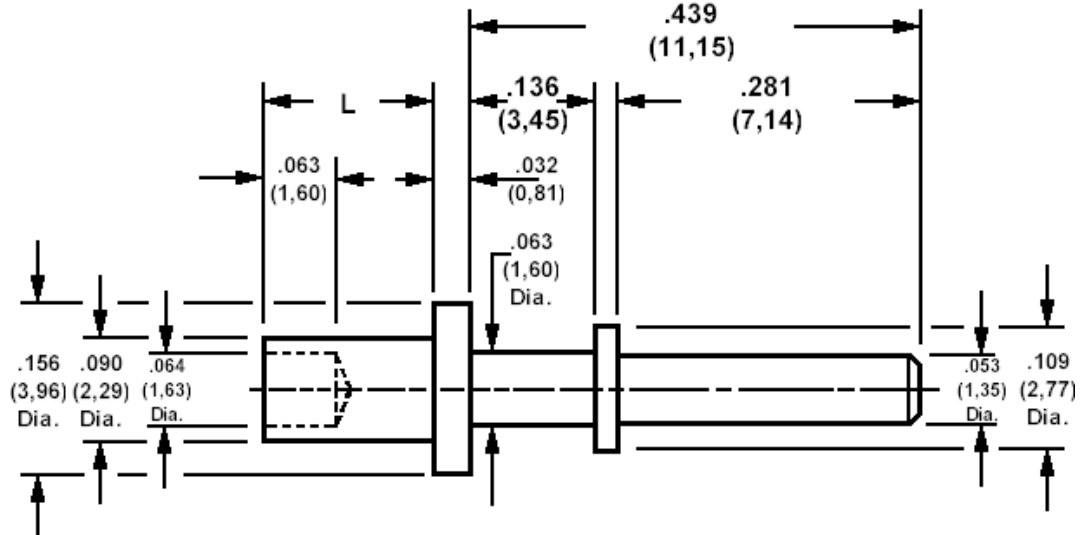


120-1014 Solder Terminal, Pin Type

Recommended mounting hole .093 (2,36), #42 drill



How to order code

120-1014-XX-YY-00

Basic Part No XX L dimension, YY = Plating Finish

DIMENSIONS (XX)			
Basic Part No	(XX)	L	Board Thickness
120-1014	-01	.078 (1,98)	.031 (0,79)
	-02	.109 (2,77)	.062 (1,57)
	-03	.141 (3,58)	.094 (2,39)
	-04	.172 (4,37)	.125 (3,18)

MATERIALS			
Component	Material	Finish (YY)	
		-01	-04
Terminal	Brass	Silver	Electro Tin

SWAGE TOOLING	
Recommended Swaging Tools:-	
Anvil	435-6447-01-00-00
Roll punch	435-6604-01-00-00
Flare Punch	435-6663-01-00-00