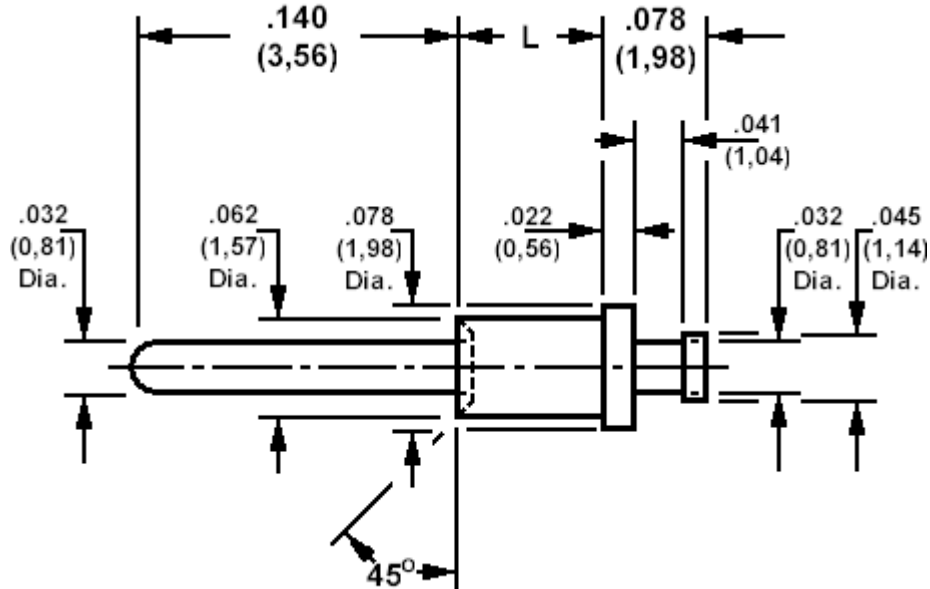


**120-1032 Solder Terminal, Pin Type**

Recommended mounting hole .067 (1,70), #51 drill



**How to order code**

**120-1032-XX-YY-00**

Basic Part No XX = L dimension, YY = Plating Finish

DIMENSIONS (XX)			
Basic Part No	(XX)	L	Board Thickness
120-1032	-01	.054 (1,37)	.031 (0,79)
	-02	.084 (2,13)	.062 (1,57)
	-03	.115 (2,92)	.094 (2,39)
	-04	.147 (3,73)	.125 (3,18)

MATERIALS			
Component	Material	Finish (YY)	
		-01	-04
Terminal	Brass	Silver	Electro Tin

SWAGE TOOLING	
Recommended Swaging Tools:-	
Anvil	435-6462-01-00-00
Roll punch	435-6619-01-00-00