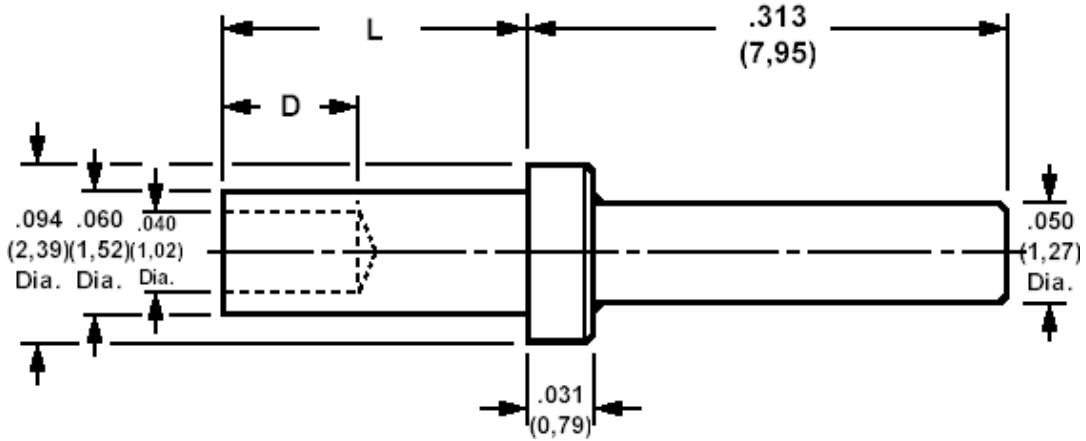


120-1133 Solder Terminal, Pin Type

Recommended mounting hole .064 (1,63), #52 drill



How to order code

120-1133-XX-YY-00

Basic Part No XX = L dimension, YY = Plating Finish

| DIMENSIONS (XX) | | | | |
|-----------------|------|-------------|-----------------|-------------|
| Basic Part No | (XX) | L | Board Thickness | D |
| 120-1133 | -01 | .063 (1,60) | .031 (0,79) | .063 (1,60) |
| | -02 | .094 (2,39) | .062 (1,57) | .071 (1,80) |
| | -03 | .125 (3,18) | .094 (2,39) | .071 (1,80) |
| | -04 | .156 (3,96) | .125 (3,18) | .071 (1,80) |

| MATERIALS | | | |
|-----------|----------|-------------|-------------|
| Component | Material | Finish (YY) | |
| | | -03 | -04 |
| Terminal | Brass | Gold | Electro-tin |

| SWAGE TOOLING | |
|-----------------------------|-------------------|
| Recommended Swaging Tools:- | |
| Anvil | 435-6479-01-00-00 |
| Roll Punch | 435-6673-01-00-00 |
| Flare Punch | 435-6692-01-00-00 |