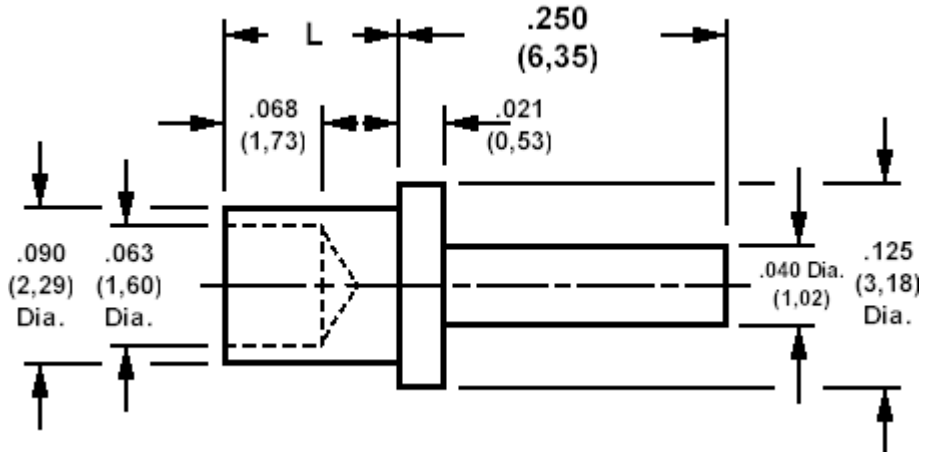


120-1366 Solder Terminal, Pin Type

Recommended mounting hole .093 (2,36), #42 drill



How to order code

120-1366-XX-YY-00

Basic Part No XX = L dimension, YY = Plating Finish

DIMENSIONS (XX)			
Basic Part No	(XX)	L	Board Thickness
120-1366	-02	.094 (2,39)	.062 (1,57)
	-03	.125 (3,18)	.094 (2,39)

MATERIALS			
Component	Material	Finish (YY)	
Terminal	Brass	-03	-04
		Gold	Electro Tin

SWAGE TOOLING	
Recommended Swaging Tools:-	
Anvil	435-6499-01-00-00
Roll punch	435-6604-01-00-00
Flare Punch	435-6663-01-00-00