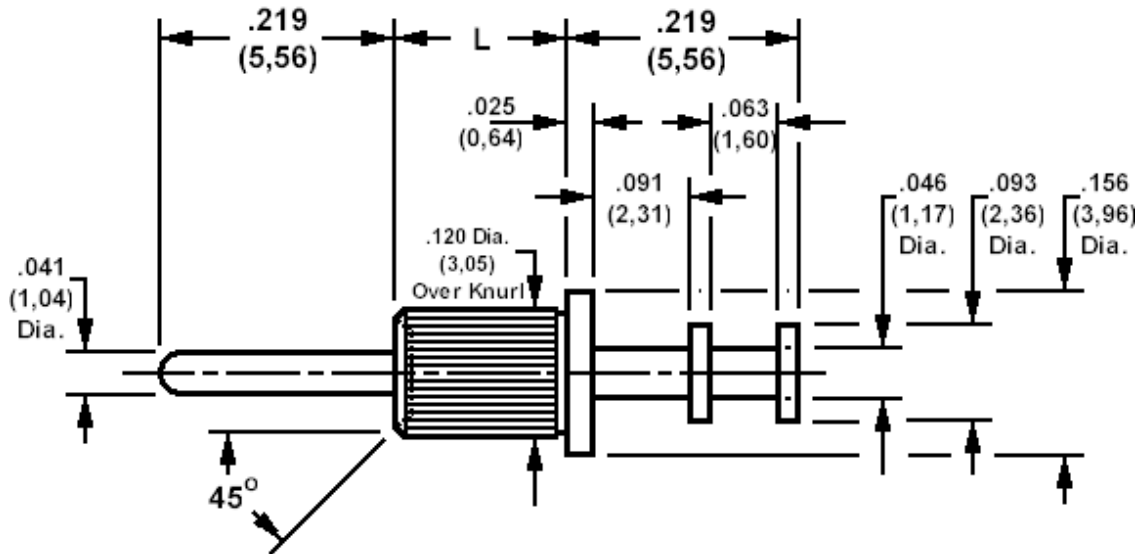


120-2081 Solder Terminal, Pin Type, Turreted

Recommended mounting hole .125 (3,18)



How to order code

120-2081-XX-01-00

Basic Part No XX = L dimension

DIMENSIONS (XX)			
Basic Part No	(XX)	L	Board Thickness
120-2081	-01	.063 (1,60)	.031 (0,79)
	-02	.093 (2,36)	.062 (1,57)
	-03	.125 (3,18)	.094 (2,39)
	-04	.156 (3,96)	.125 (3,18)

MATERIALS		
Component	Material	Finish
Terminal	Brass	-01 Silver

SWAGE TOOLING	
Recommended Swaging Tools:-	
Anvil	435-6422-01-00-00
Roll punch	435-6622-01-00-00