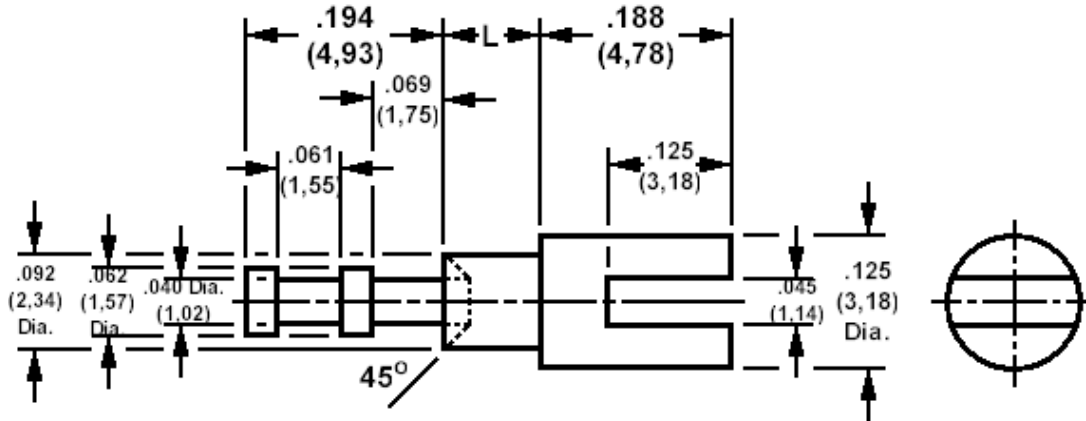


140-1033 Solder Terminal, slotted, Feed Thru

Recommended mounting hole .096 (2.44), #41 drill



How to order code
140-1033-XX-YY-00

Basic Part No XX = L dimension, YY = Plating Finish

DIMENSIONS (XX)			
Basic Part No		L	Board Thickness
140-1033	-02	.094 (2,39)	.062 (1,57)
	-03	.125 (3,18)	.094 (2,39)
	-04	.156 (3,96)	.125 (3,18)

MATERIALS				
Component	Material	Finish (YY)		
		-01	-04	-05
Terminal	Brass	Silver	Electro tin	Electro Solder

SWAGE TOOLING	
Recommended Swaging Tools:-	
Anvil	435-6417-01-00-00
Roll punch	435-6654-01-00-00