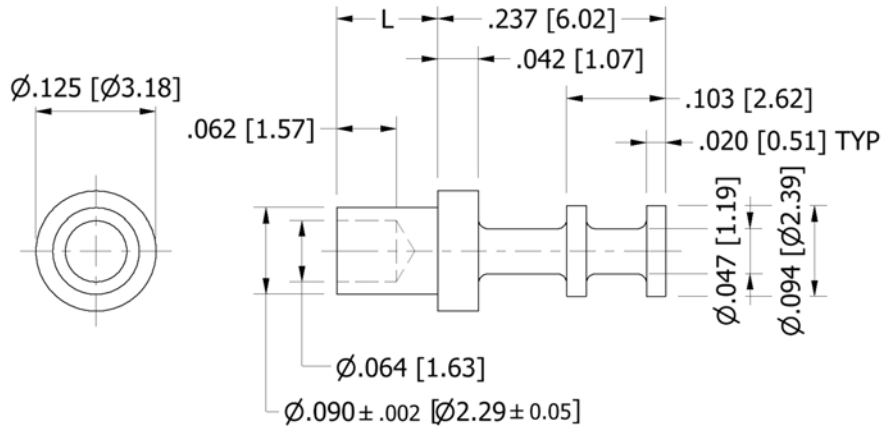


160-1026 Solder Terminal, Turreted

Recommended mounting hole .093 (2,36), #42 drill



How to order code

160-1026-XX-YY-00

Basic Part No XX = L dimension, YY = Plating Finish

DIMENSIONS (XX)			
Basic Part No	(XX)	L	Board Thickness
160-1026	-01	.075 (1,91)	.031 (0,79)
	-02	.105 (2,67)	.062 (1,57)
	-03	.135 (3,43)	.094 (2,39)
	-04	.165 (4,19)	.125 (3,18)

MATERIALS			
Component	Material	Finish (YY)	
		-01	-05
Terminal	Brass	Silver	Electro Solder

SWAGE TOOLING	
Recommended Swaging Tools:-	
Anvil	435-6404-01-00-00
Roll punch	435-6604-01-00-00
Flare punch	435-6663-01-00-00

Dimensions in inches [mm]
 Tolerance unless otherwise stated ±.003 [0.08]