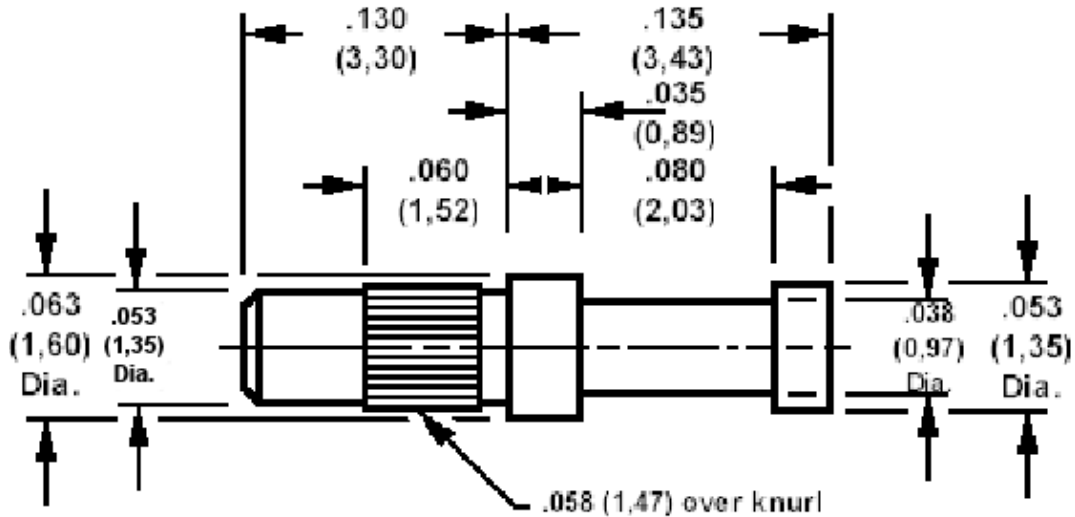


**160-3747 Solder Terminal, Turreted, Knurled**

Recommended mounting hole .055 (1,40), #54 drill



How to order code

160-3747-01-YY-00

Basic Part No YY = Plating Finish

MATERIALS				
Component	Material	Finish (YY)		
		-01	-04	-05
Terminal	Brass	Silver	Electro Tin	Electro Solder

INSERTION TOOLING	
Recommended Insertion Tool:-	
	435-2985-01-00-00