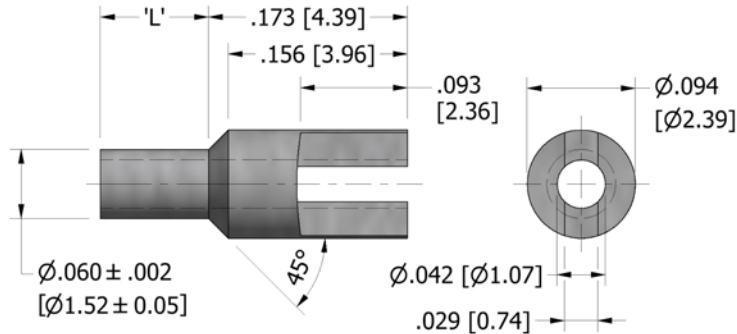


180-7338 Solder Terminal, Slotted, Thru Hole

Recommended mounting hole .064 (1,63), #52 drill



How to order code
180-7338-XX-YY-00

Basic Part No XX = L dimension, YY = Plating Finish

DIMENSIONS (XX)			
Basic Part No	(XX)	L	Board Thickness
180-7338	-01	.062 (1,57)	.031 (0,79)
	-02	.094 (2,39)	.062 (1,57)
	-03	.125 (3,18)	.094 (2,39)
	-04	.156 (3,96)	.125 (3,18)

MATERIALS			
Component	Material	Finish (YY)	
		-04	-05
Terminal	Leaded Red Brass	Electro Tin	Electro Solder

SWAGE TOOLING	
Recommended Swaging Tools:-	
Anvil	435-6412-01-00-00
Flare Punch	435-6692-01-00-00



Dimensions in inches [mm]
 Tolerance unless otherwise stated ±.005 [0.13]