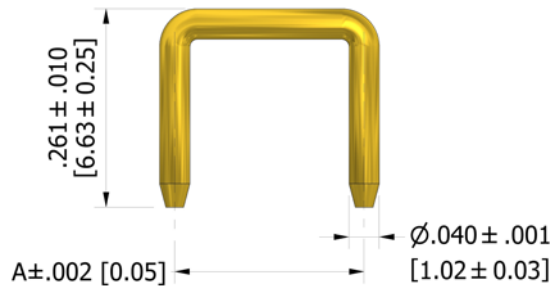


**360-8118 Shorting Link, Non-Insulated, .040 (1,02) diameter pins  
 Non-Magnetic**

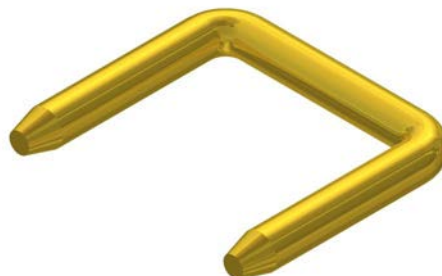
(For insulated version see 461-8116 and 461-8119)



**How to order code**  
**360-8118-XX-YY-00**  
**Basic Part No XX = A dimension, YY = finish**

DIMENSIONS	
Dash No (XX)	A Dimension
-01	.200 (5,08)
-02	.250 (6,35)
-03	.300 (7,62)
-04	.400 (10,16)
-05	.500 (12,70)

MATERIALS			
Component	Material	Finish (YY)	Finish (YY)
		-03	-04
Pin	Brass, non-magnetic	Gold 7.5um over Copper	Electro-Tin over Copper



Dimensions in inches [mm]  
 Tolerance unless otherwise stated  $\pm .003$  [0.08]