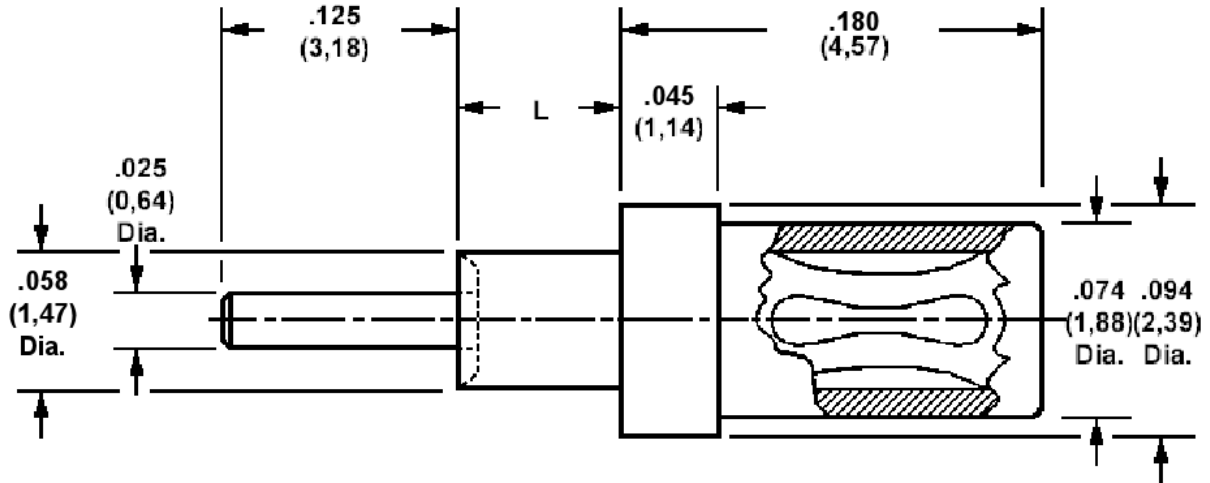


**450-3263 Swage Mount Socket, Stackable,
 .025 (0,64) Diameter Pin and Socket**
 Recommended mounting hole .062 (1,57) ± .002 (0,05)



Min hole depth .144 (3.66)

How to order code
450-3263-YY-XX-00

Basic Part No YY = Board thickness XX = Finish

Dash No (YY)	'L'	Board Thickness
-01	.051 (1,30)	.031 (0,79)
-02	.082 (2,08)	.062 (1,57)
-03	.113 (2,87)	.094 (2,39)
-04	.145 (3,68)	.125 (3,18)

MATERIALS				
Component	Material	FINISH (XX)		
		03	04	06
Body	Brass	Gold over Nickel	Electro Tin	Electro Tin
Spring	Beryllium copper	Gold over Nickel	Electro Tin	Gold over Nickel

TOOLING	
Anvil	435-6495-01-00-00
Roll Punch	435-6619-01-00-00