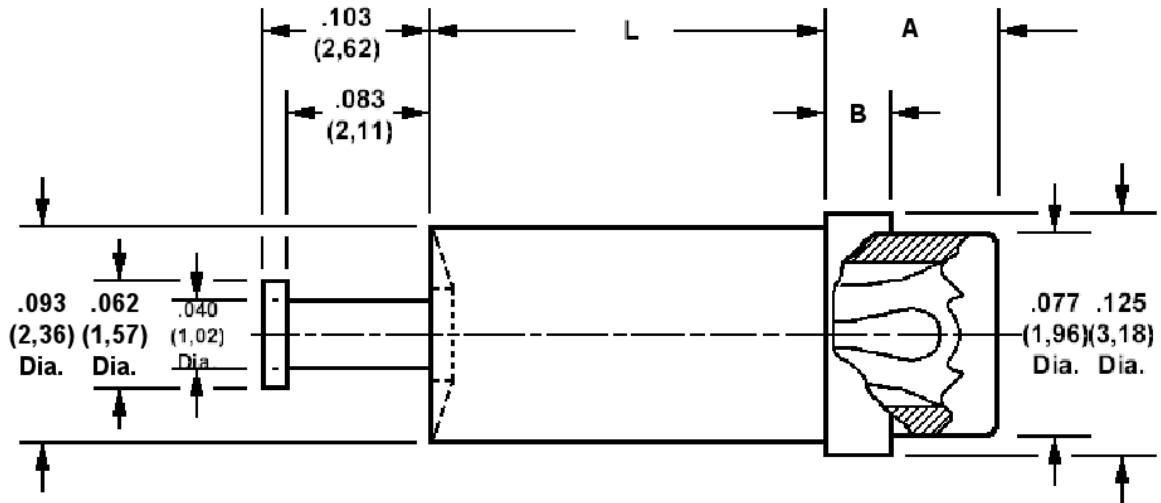


450-3375 Swage Mount Socket, for .025 (0,64) Diameter Pins

Recommended mounting hole .094 (2,39) + .002 (0,05) - .001 (0,03)



Min hole depth .141 (3,58)

How to order code
450-3375-YY-XX-00
 Basic Part No XX = Finish

Dash No	L	Board Thickness	A	B
-02	.094 (2,39)	.062 (1,57)	.106 (2,69)	.062 (1,57)
-03	.125 (3,18)	.094 (2,39)	.075 (1,91)	.031 (0,79)
-04	.156 (3,96)	.125 (3,18)	.075 (1,91)	.031 (0,79)
-05	.218 (5,56)	.188 (4,75)	.075 (1,91)	.031 (0,79)

MATERIALS				
Component	Material	Finish (-03)	Finish (-04)	Finish (-06)
Body	Brass	Gold over Nickel	Electro Tin	Electro Tin
Spring	Beryllium copper	Gold over Nickel	Electro Tin	Gold over Nickel

TOOLING	
Recommended Swaging Tools:-	
Anvil	435-6446-01-00-00
Roll Punch	435-6654-01-00-00