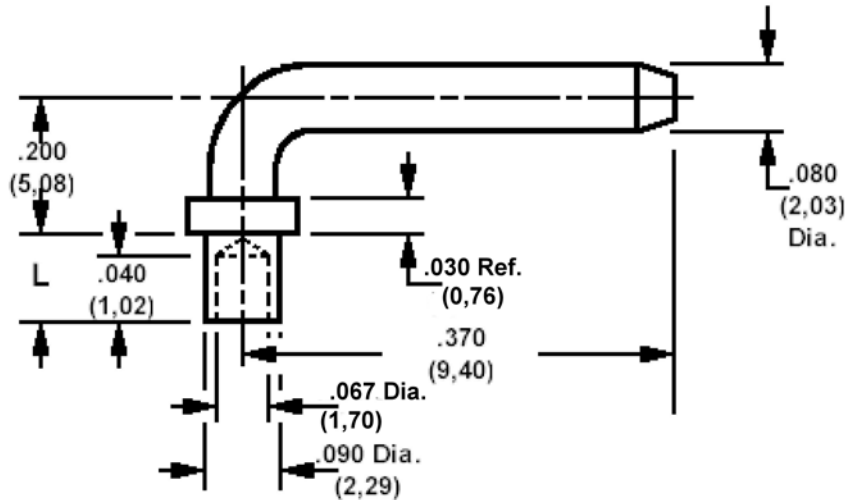


460-1523 Swage Mount, Right Angle, .080 (2,03) Diameter Pin

Recommended mounting hole .094 (2,39) ± .002 (0,05)



How to order code
460-1523-XX-YY-00

Basic Part No XX= L dimension, YY = Plating Finish

MATERIALS

Component	Material	Finish (-03)	Finish (-04)
Pin	Brass	Gold over Nickel	Electro Tin

DIMENSIONS

Basic Part Number	(XX)	L	Board Thickness
460-1523	-01	.051 (1,30)	.031 (0,79)
	-02	.082 (2,08)	.062 (1,57)
	-03	.113 (2,87)	.094 (2,39)

SWAGE TOOLING

Recommended Swaging Tools:-	
Anvil	435-6528-01-00-00
Flare Punch	435-6663-01-00-00

Because of pin configuration, these tools cannot be used in manual swager 435-3803-01-00-00