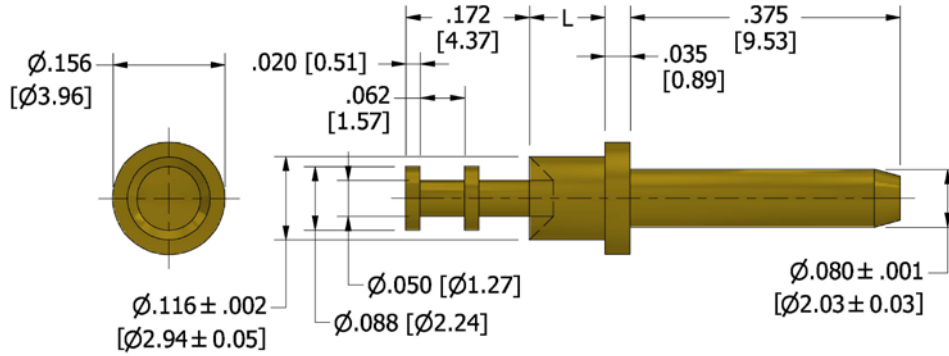


**460-2605 Swage Mount, .080 (2,03) Diameter Pin**

Recommended mounting hole .120 (3,05) ± .002 (0,05)



**How to order code**

**460-2605-XX-YY-00**

**Basic Part No XX = L dimension, YY = Plating Finish**

DIMENSIONS (XX)			
Basic Part Number	(XX)	L	Board Thickness
460-2605	-02	.105 (2,67)	.062 (1,57)
	-03	.135 (3,43)	.094 (2,39)
	-04	.165 (4,19)	.125 (3,18)

MATERIALS			
Component	Material	Finish (-03)	Finish (-04)
Pin	Brass	Gold over Nickel	Electro Tin

SWAGE TOOLING	
Recommended Swaging Tools:-	
Anvil	435-6523-01-00-00
Roll Punch	435-6620-01-00-00